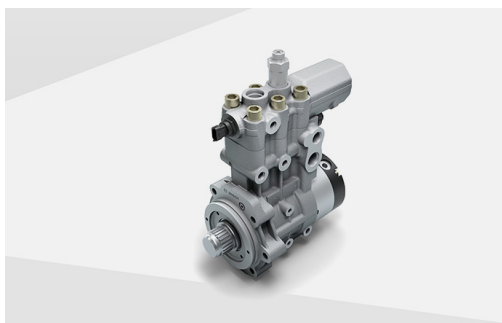
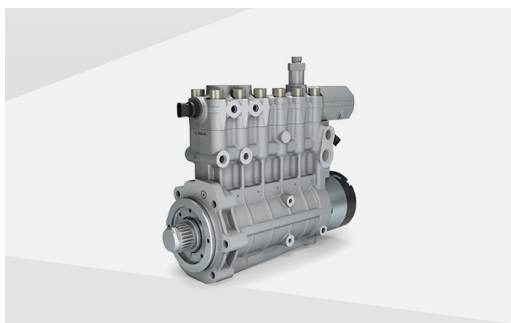
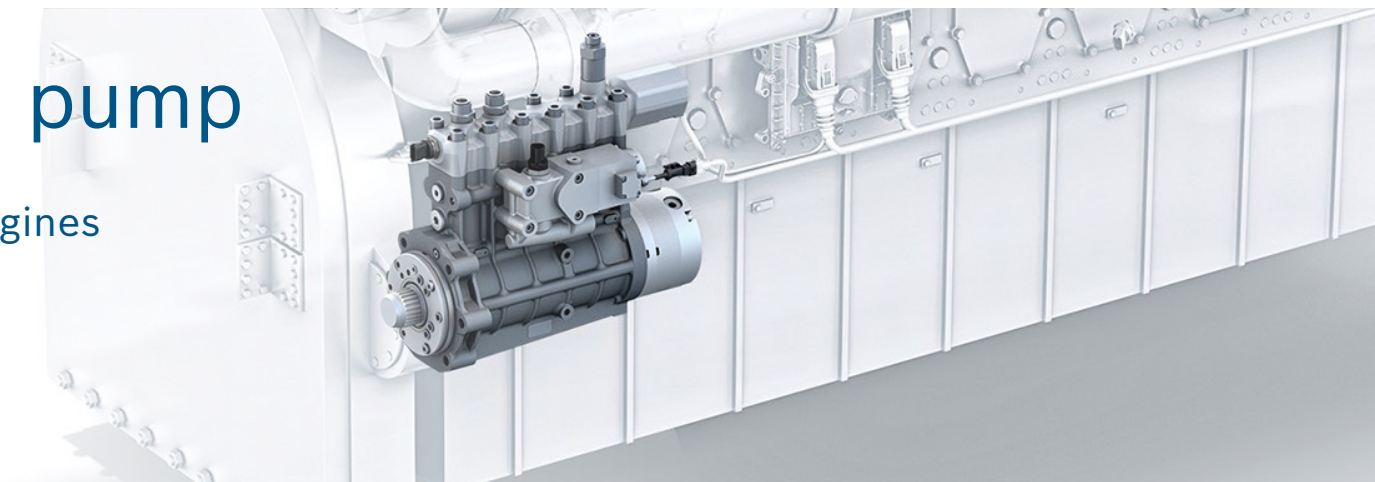


# CP9 high-pressure pump

For common-rail systems in large engines



Up to  
**2,200 bar**

system pressure for efficient combustion

Up to  
**20,000 h**

lifetime due to robust design

- The oil-lubricated CP9 high-pressure pump delivers the fuel into the piping system leading to the injector under high pressure
- The CP9 is a highly successful common-rail pump on the large engine market. It has a modular construction and can be adapted to meet the engine's requirements
- The CP9 is suitable for pressure levels ranging from 1,600 to 2,200 bar
- The CP9 consists of up to five high-pressure elements, each integrated in a housing with separate engine driven camshaft
- Furthermore it is qualified for specified drop-in bio,- and e-fuels