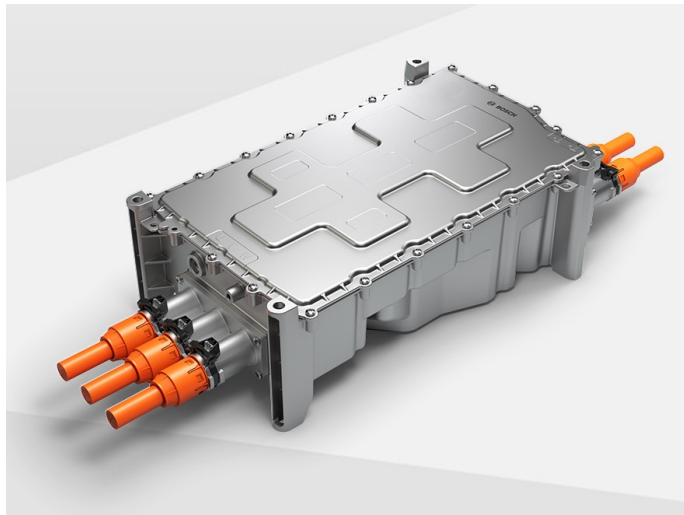




Energy

# Inverter for commercial vehicles

Efficient solution for battery-electric and fuel cell-electric commercial vehicles



## Up to 99% efficiency

for more range or alternative lower battery capacity

## High power output

up to 850 ARMS continuous current and 1100 ARMS peak current specially designed for applications in heavy-duty segment

- The inverter generation 4 is a solution for commercial vehicles that fits to medium- duty and heavy-duty trucks, coaches, city busses and even special use cases
- The inverter converts the direct current from the battery into the alternating current required by the electric motor
- With its electronic control and monitoring of the electric motor, it ensures a safe and demand-based electrical supply for the electric drive